



Model HZ-1010A Touch Screen Controlled Universal Material Testing Machine



Product Introduction

HZ-1010A

Revision A

Proprietary Rights Notice

This document and the information that it contains are the property of Chinese government authorization. Rights to duplicate or otherwise copy this document and rights to disclose the document and the information that it contains to others and the right to use the information contained therein may be acquired only by written permission signed by a duly authorized officer of Chinese government.

Trademarks

Lixian[®] is a registered trademark of Chinese government authorization. Other names, logos, icons and marks identifying Lixian products and services referenced herein are trademarks of Chinese government authorization and may not be used without the prior written permission of Chinese government authorization

Other product and company names listed are trademarks or trade names of their respective companies.

Original Instructions

Copyright © 2018 Central Lixian Instrument Scientific Co., Ltd.. All rights reserved. All of the specifications shown in this document are subject to change without notice.

National/Worldwide Headquarters

Dongguan Lixian Instrument Scientific CO.,LTD
No.2 Xinhe Hengxing Road, Wanjiang District, Dongguan City, 523000, Guangdong Province,
China

Touch Screen Controlled Universal Material Testing Machine

Lixian UTM Testing Series

Equipment Overview

HZ-1010A Touch Screen Controlled Universal Material Testing Machine is a new material testing machine that combined with the electronic technology and mechanical transmission, it has accurate load speed, range of force measurement, Has high accuracy and sensitivity for the load, displacement measurement and control, This machine is simple to operate, simple structure, it can be directly placed on the testing table for test, especially suitable for controlling quality in production line This series of machine is mainly applied to test the non-metallic and metallic materials which the load is less than 2ton.



Main functions

This machine can be test all the material in tensile, compression, bending, shear, peel, tear, two-point extended (need add extensometer) and others for control products quality. Such as textile, rubber, plastics, synthetic leather, tape, adhesive, plastic film, composite materials, electronics, metals and other materials.

Main functions:

This machine can be test all the material in tensile, compression, bending, shear, peel, tear, two-point extended (need add extensometer) and others for control products quality. Such as textile, rubber, plastics, synthetic leather, tape, adhesive, plastic film, composite materials, electronics, metals and other materials

Applicable industry

It is widely used in wire and cable, hardware, electronic and electrical equipment, packaging, printing, medical equipment, auto parts, textiles and leather, clothing, shoes, rubber and plastic products, colleges and universities; research laboratories; inspection arbitration, technical supervision departments and many other industries, it is the basic equipment for quality management and physical tested

corresponding standard

《GB/T16491-1996 electronic universal testing machine》

Features

1. the surface of appearance using electrostatic spray, simple and generous, multi-functions and economy
2. digital force displayed by LCD , discernible tension or pressure, LCD display clearly
3. Three kinds of units: N-Kgf-Lbf option or automatically exchange;
4. LCD with backlight can be used in low-light environments
5. Single measurement, it can record the max force of tension and compression in both directions, automatic or manual cleared to zero.
- 6.The system would shut down if overload or over-trip
7. Structure of single-column is beautiful, sophisticated and economy..

Machine has function of printing. Can store 10 testing results and auto-calculate its average, auto-grab maximum force and the force at break.

Display: HZ-2000 dark blue LCD display, membrane touch keys, with the following functions

- ① single test, 10-point statistics manually and automatically calculate its average and break values;
- ②. Multi-unit automatically exchange such as kgf, Lbf, N;

-
- ③. function of free to take point;
 - ④. With multi-calibration function;
 - ⑤. Auto printing function;
 - ⑥. Using 24-bit AD acquisition, resolution 1 / 200000;
 - ⑦. Decimal digits 0 to 4 arbitrary choice;
 - ⑧. Starting up using password protection feature, which can effectively prevent the non-operators to use
 - ⑨. ratio of Breakpoint from 0 ~ 99%, which the user can set according to different materials to stop the machine
 - ⑩. Overload protection function can be set, effectively preventing machine from overload;

O、 power supply: AC 220V single-phase。

P、 power: 400W

Q、 machine size:about1200*530*1800mm(length * width * height)。

R、 weight: 70kg

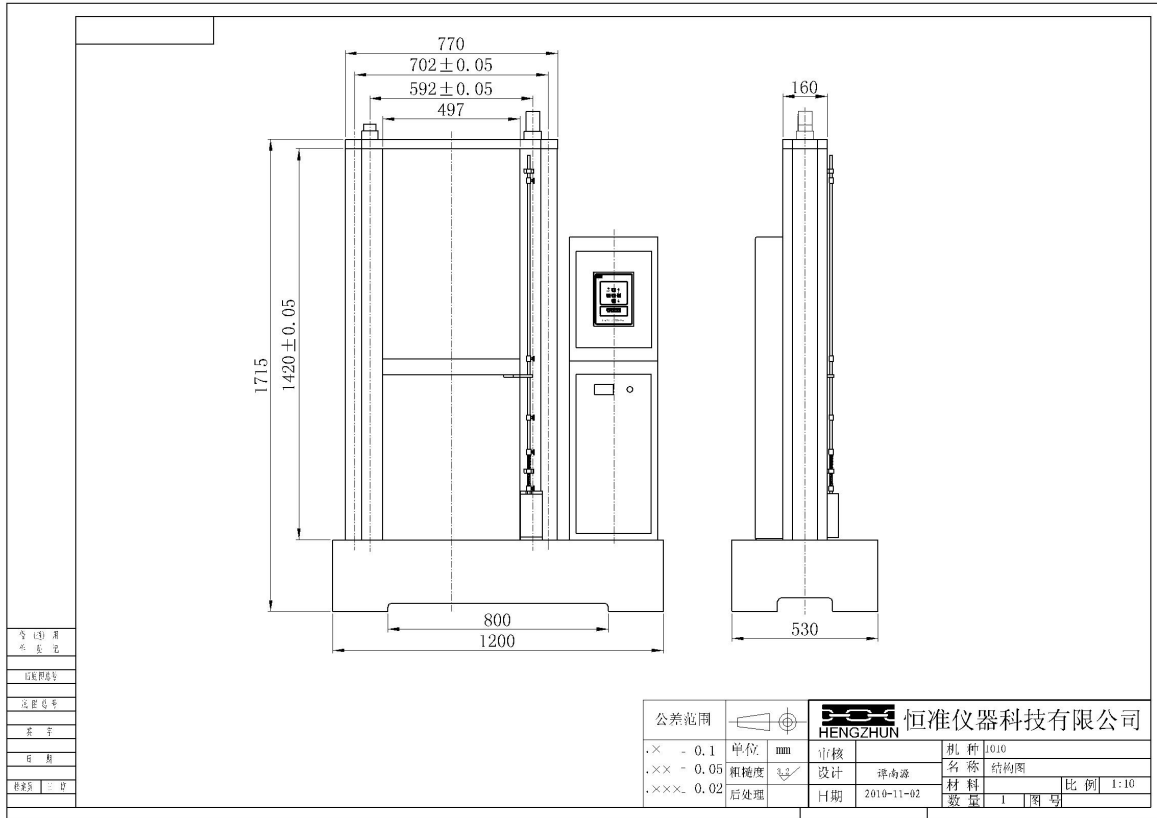
Original configuration

A group of compression platen.

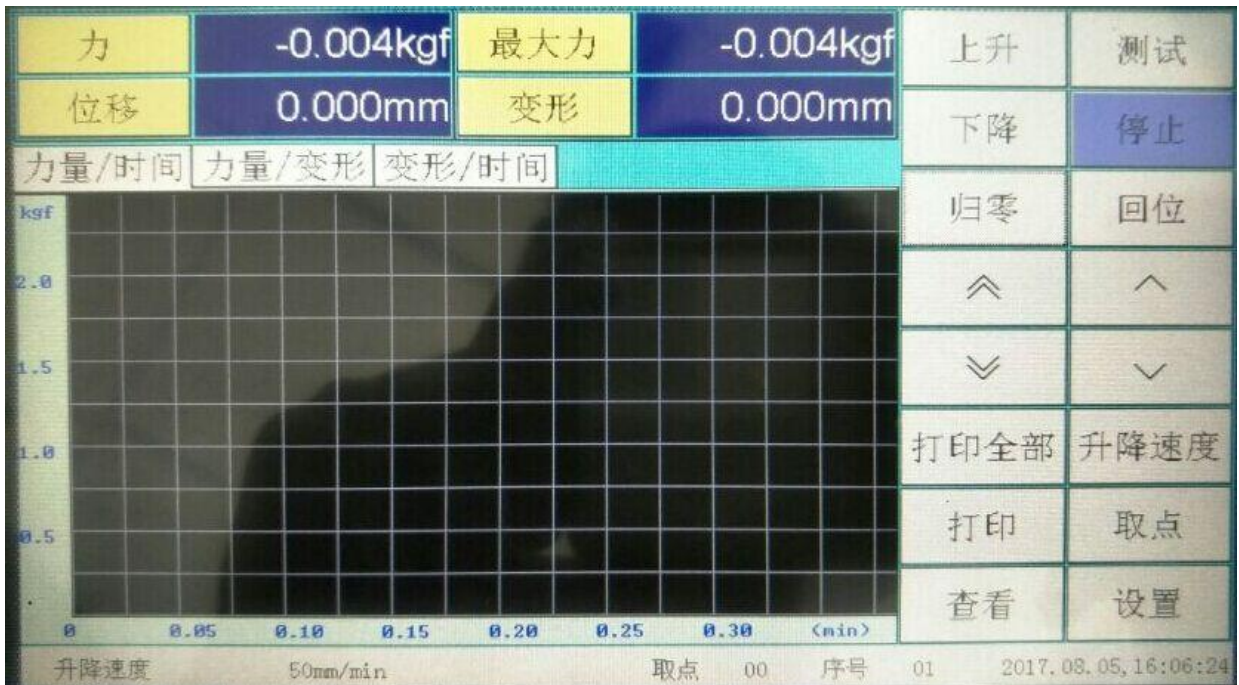
Extension :

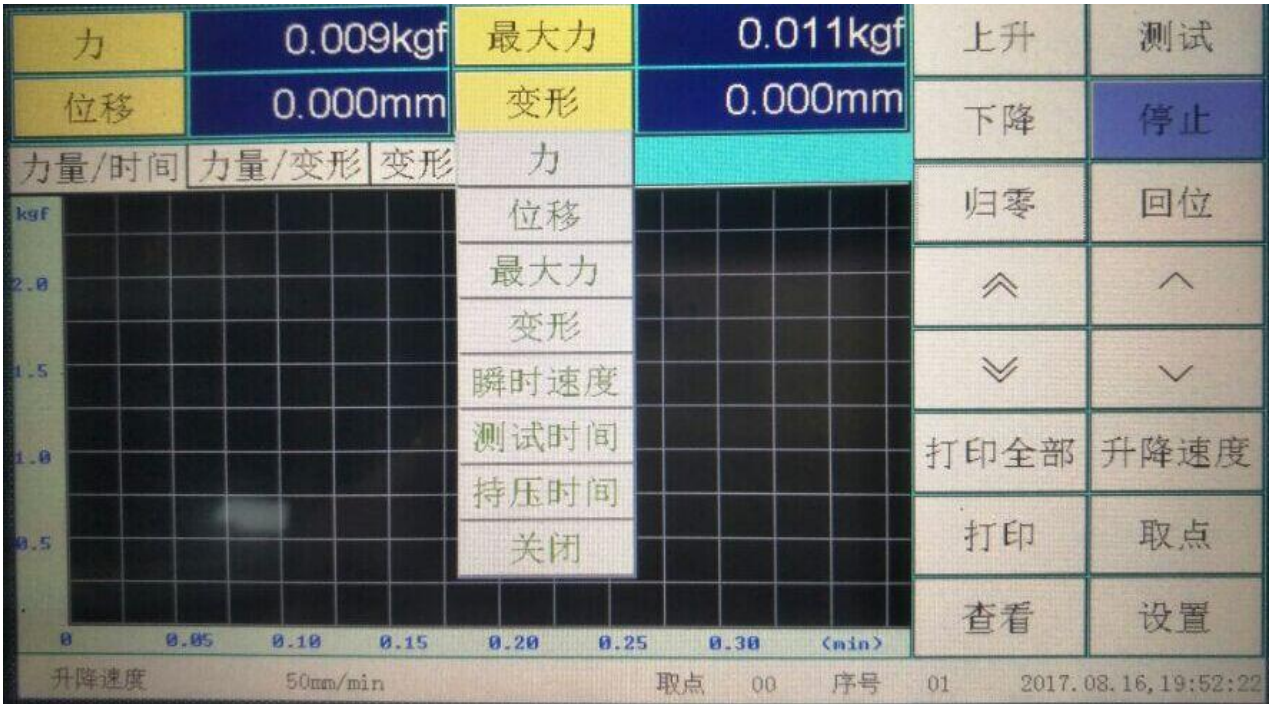
Company can design and provide the fixtures according to the needs of customers, but the cost needs to add.

Structure:



Touch screen showing (support Chinese and English Language)





试样信息

1. 试样数量: 默认设置

2. 拉伸强度单位: 时间设定

3. 撕裂&剥离强度单位: 校准

4. 试样形状: 版本信息

序号	标距 (mm)	宽度 (mm)	厚度 (mm)
1	10.000	5.000	3.000

上页
下页
测试界面

Technical Parameters

Model	HZ-1010A
Standard	GB/T16491-1996
Maximum Load	50KG
load cell	50kg
accuracy of load measurement	the load cell + HZ-2000 screen $\pm 0.5\%$ (full range of 5% -100%)
Units:	Kg、Lb、N
Resolution	1 / 50000
displacement resolution	0.001mm
power system	AC motor,deceleration device (from Italy)
control system	testing speed 50~300 mm/min with step-less speed and 5 fixed-speed (50,100, 200, 250,300) or the needs of customer
Data sampling frequency	200 times/sec
displacement	400、500、600mm。
Safety devices	overload, emergency stop devices, limited devices of displacement,leak current protection device

Product Support

Lixian[®] provides documentation, including manuals and online help, that can answer many of the questions you may have. It is recommended that you review the documentation sent with the system you purchased for possible solutions to your questions.

If you cannot find answers in these sources, contact Lixian[®] Service directly. A list of Lixian[®] offices is available on our website at www.lyxyantech.com. In China, you can call directly at +86-137-1188-8650.

HZ-1010A Touch Screen Controlled Universal Material Testing Machine Power requirements

Table 2. HZ-1010A power requirements

Parameter	Specification
Maximum Power (VA)	256
Single Phase Voltage (Vac) ($\pm 10\%$)	220~240, 100~120 (customize)
Frequency - Hz	47 to 63
Length of Power Cable - m (ft)	2.44 (8)



For 230 Vac operation, the frame is normally set to 240 V.

The 230 Vac option on the voltage selector is designed for 220 Vac $\pm 10\%$.

Warning



Electrical hazard - to ensure safety and Electromagnetic Compatibility (EMC) the facility's receptacle must be a 3-wire grounded receptacle. The ground must be a low impedance earth ground in accordance with national and/or local regulations.

Warning



You must use GFCI (Ground Fault Circuit Interruption) protection on all power sources if your testing system includes water or any other fluid.

If your system includes any fluids (e.g. water-cooled grips, BioPuls baths, food testing fixtures), you must use GFCI protection on all power sources to protect the operator from fluids that might leak into the load frame electronics.

LIXIAN

C R E A T I V E

Add: No. 88 He ngxing Road, Xinhe, Wanjiang, Dongguan

Email: sales1@hengzhunx.com

WhatsApp: +86 137 1188 8650

TEL: +86 0769 23388228

Web: www.lyxyantech.com

EXCELLENT BUSINESS

EXCELLENT PRODUCT

EXCELLENT SERVICE